

# The WebFOCUS App Studio Interface

## Quick Access Toolbar

- Displays frequently used commands, such as New, Open, Save, Run, Print, Cut, Copy, Paste, Undo, and Redo.

## Application button

- Provides access to the Application menu of file-related commands.

## Ribbon

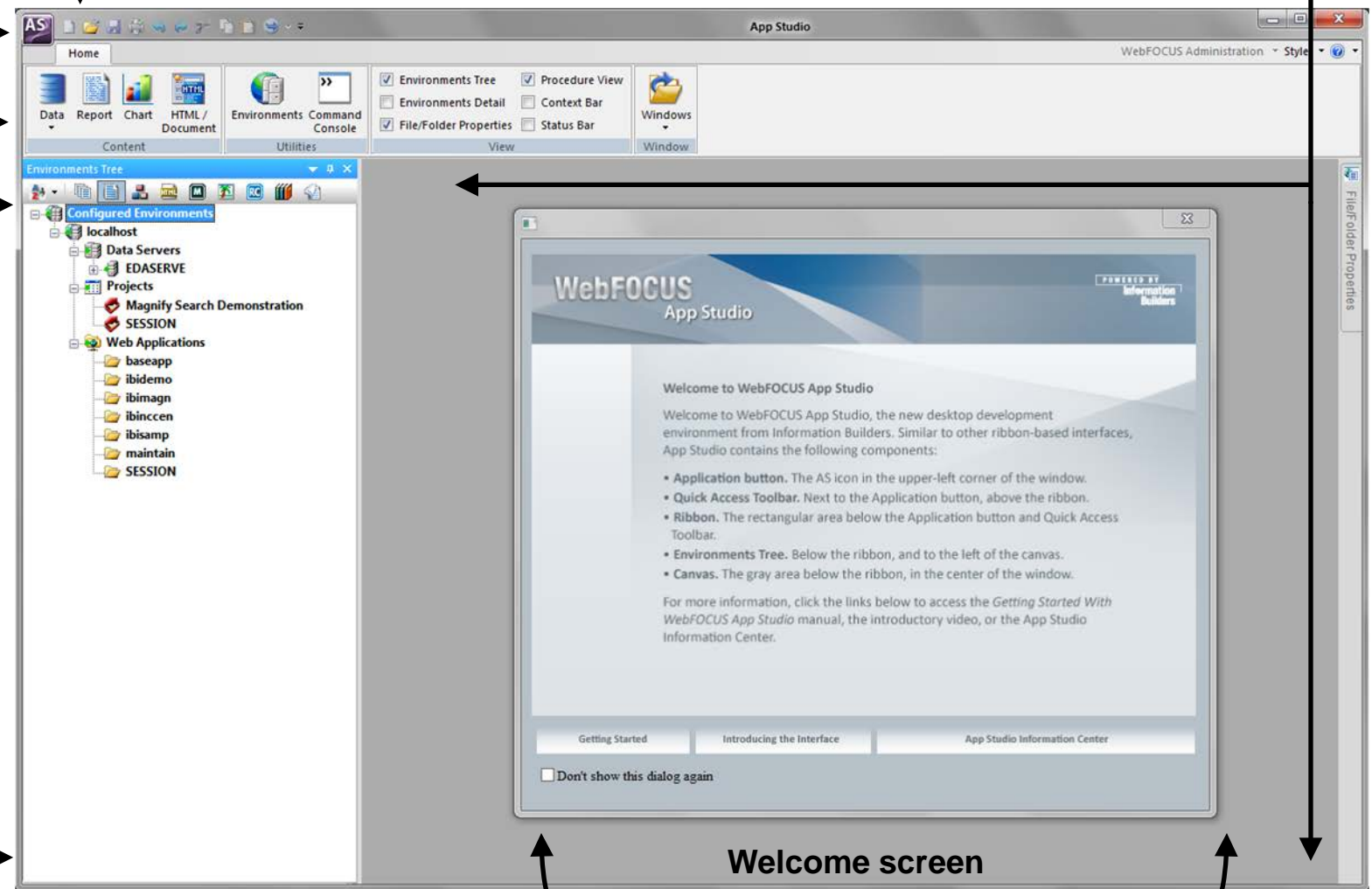
- Displays both static and contextual tabs of commands that you can use to build and customize applications.

## Environments Tree panel

- Provides access to the WebFOCUS environments you configure, and files you create under each development area.

## Canvas

- Provides an active preview of your application development.



For more information, see *Getting Started With WebFOCUS App Studio* in the App Studio Information Center at <http://ecl.informationbuilders.com/appstudio/index.jsp>.

- Introduces the new App Studio user interface and provides hyperlinks to get you started with the product.

# WebFOCUS

App Studio

For more information, see the  
App Studio Information Center at:  
<http://ecl.informationbuilders.com/appstudio/index.jsp>