

Information Builders helps organizations transform data into business value. Our business intelligence, integration, and data integrity solutions enable smarter decision-making, strengthen customer relationships, improve performance, and drive growth.



Table of Contents

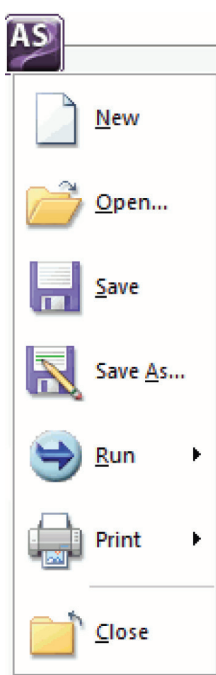
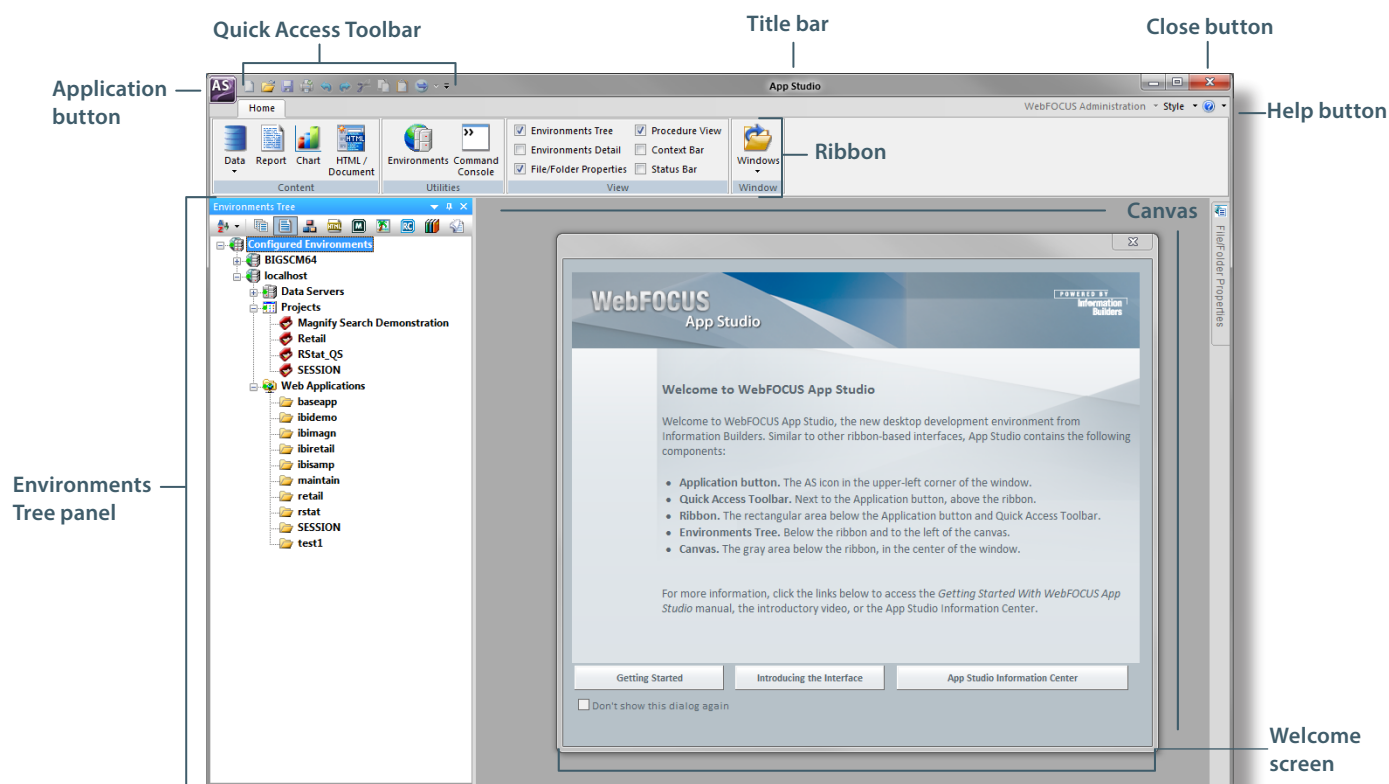
- *The Interface Components on page 2*
- *Creating Content With WebFOCUS App Studio on page 3*
- *Mobile Design for HTML Pages on page 4*

WebFOCUS App Studio Quick Reference Guide

Introducing WebFOCUS App Studio

WebFOCUS App Studio is the new Windows-based graphical user interface (GUI) development environment for creating advanced WebFOCUS applications. App Studio utilizes the Microsoft Windows® ribbon framework to deliver an interactive user interface (UI) from which you can build multiple business intelligence applications in the same workspace. In App Studio, you can:

- **Access data and descriptions.** Using the Metadata canvas, you can create new synonyms, and view or modify existing synonyms, in a graphical user interface. Synonyms enable you to access and interpret data sources for use in reporting applications.
- **Create reporting applications.** Build reporting procedures in the Report canvas, Chart canvas, HTML canvas, or Document canvas.
 - **Reports.** Display your data in a tabular format. You can create stand-alone reporting procedures, or add the report to a document or an HTML page.
 - **Charts.** Communicate your data in a more illustrative format. You can translate complex data into an easy-to-read and understandable visual format. This often provides a new perspective to the information that users view. You can create stand-alone charting procedures or add the chart to a document or an HTML page.
 - **HTML pages.** Build webpages for users to launch, view, and analyze data. You can add multiple reports and charting procedures to an HTML page, in addition to the controls that enable you to manipulate the data. You can also apply styling through the use of cascading style sheets, JavaScript files, and jQuery animations.
 - **Documents.** Combine multiple report and charting procedures in a single output that you can organize and format. You can also add pre-process and post-process codes to customize how your document is executed.
 - **Visualizations.** Create charts, maps, and grids to visually represent your data. You can add multiple visuals to the canvas to create a complete visualization, and you can update, change, or revise the visualization at any time to account for shifts in data needs.
 - **Alerts.** Create event-driven procedures that apply test conditions and then trigger customized reports if the test conditions are true. You can schedule an Alert using ReportCaster Distribution Methods.
 - **Reporting Objects.** Transform complex views of data into simple objects that are labeled with common business terminology for users to understand and use as templates to create their own reports.
- **Customize reporting applications.** In addition to customizing your reporting applications by applying styling and color, you can add virtual fields, define functions, joins, and OLAP hierarchies to a procedure.
- **Manage your environment.** You can apply functions to your reporting applications to change the behavior of your environment.



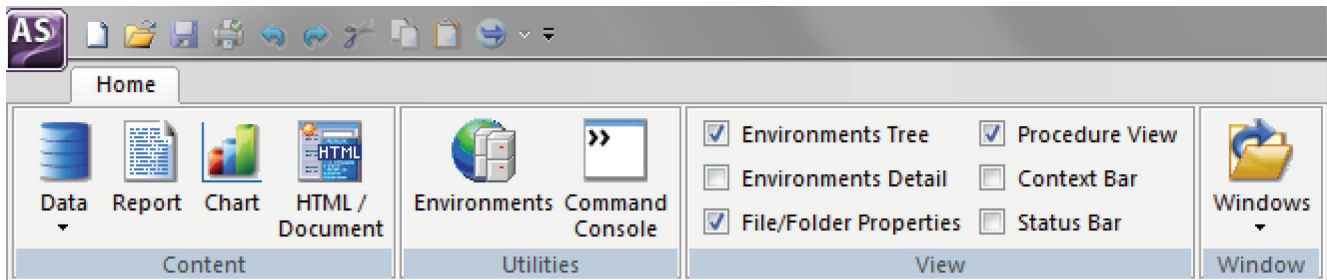
The Interface Components

- The Application button provides access to the Application menu of file-related commands.
- The Quick Access Toolbar, by default, displays frequently used commands, such as New, Open, Save, Quick Print, Undo, Redo, Cut, Copy, Paste, and Run.
- The Environments Tree panel provides access to the WebFOCUS environments you configure, and files you create under each development area.
- The canvas provides an active preview of your application development.
- The Welcome screen introduces the new App Studio user interface and provides hyperlinks to get you started with the product.
- The ribbon displays both static and contextual tabs of commands that you can use to build and customize applications.
- From the Help button menu, you can access the online Help system, display the Welcome screen, reset the interface layout, and view license and product information.

Tip: You can also press the F1 key to access the online Help system.

Creating Content With WebFOCUS App Studio

In App Studio, wizards assist you in streamlining the creation of content. A series of panes provide you with options relevant to the type of content that you want to create. They are accessed from the Home tab and from the Environments Tree panel shortcut menus, when you are creating content.



Creating Procedures

To create a new procedure:

1. From the Environments Tree panel shortcut menu, point to *New*, and click *Procedure*.
or
Click the *New* button on the Quick Access Toolbar or click *New* from the Application menu. In the New dialog box, click *Procedure*, then click *OK*.
2. The Procedure View panel opens. From here, you can add components to your procedure, such as reports, defines, and joins.

Note: To make the New options active, select an application folder in the Configured Environments tree.

Creating HTML Pages or Documents

To create a new HTML page or document:

1. On the *Home* tab, in the *Content* group, click *HTML/Document*.
or
From the Environments Tree panel shortcut menu, point to *New*, and click *HTML/Document*.
2. The HTML/Document Wizard opens. Follow the prompts to create your HTML page or document.
3. The HTML canvas or Document canvas opens. From here, you can further develop your HTML page or document using the available tabs and panels.

Creating Reports

To create a new report or SQL report:

1. On the *Home* tab, in the *Content* group, click *Report*.
or
From the Environments Tree panel shortcut menu, point to *New*, and click *Report* or *SQL Report*.
2. The Report Wizard opens. Follow the prompts to create your report.
3. The Report canvas opens. From here, you can further develop your report using the available tabs and panels.

Creating Charts

To create a new chart or SQL chart:

1. On the *Home* tab, in the *Content* group, click *Chart*.
or
From the Environments Tree panel shortcut menu, point to *New*, and click *Chart* or *SQL Chart*.
2. The Chart Wizard opens. Follow the prompts to create your chart.
3. The Chart canvas opens. From here, you can further develop your chart using the available tabs and panels.

Find Out More

Visit the WebFOCUS App Studio Information Center for access to the App Studio technical components, welcome video, and more:

<http://ecl.informationbuilders.com/appstudio/index.jsp>

Mobile Design for HTML Pages

In App Studio, you can create HTML pages that are formatted specifically to be used on a mobile phone. When an HTML page is formatted for a mobile phone, components and controls are presented differently so that they can be used in conjunction with touch-screen technology.

When an HTML page is converted and used on a mobile phone, it will have one home page and multiple output pages, depending on how many components you have. You can set which page you want as your home screen by using the HTML canvas shortcut menu on that particular page and clicking *Use current page as home page*.

Tutorial: Enabling Mobile Design for a New HTML Page

1. On the *Home* tab, in the *Content* group, click *HTML/Document*.

You can also create a new HTML page from the Application menu or by using the shortcut menu in the Environments Tree panel, when on a valid folder.

The HTML/Document Wizard opens.

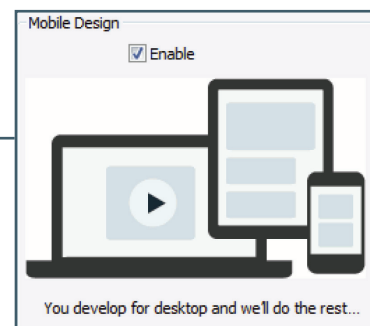
2. Select a valid path for your HTML page and click *Next*.

The Themes and Settings window of the HTML/Document Wizard opens.

3. In the Mobile Design section, select *Enable*.

4. Click *Finish*.

Your HTML page has the Enable mobile property set to Yes and you can begin developing your HTML page for mobile use. You must save your mobile HTML page before you run it, in order to view it in the mobile layout preview.



Tutorial: Enabling Mobile Design for an Existing HTML Page

1. Open your HTML page in the HTML canvas.
2. Click the Properties panel, located on the right side of the App Studio interface.

3. In the Miscellaneous section, click *Enable mobile* and choose *Yes* from the drop-down list.

Your HTML page now has mobile layout enabled. You can begin developing your HTML page for mobile use.

